

INSTALL INSTRUCTIONS



REAR DISCONNECT INSTALL INSTRUCTIONS

(104101-1-K)

KIT CONTENTS

1 ct.

Rear Disconnect Intermediate Housing Assmly



1 ct.

Rear Disconnect Tail Housing Assembly



1 ct.

Rear Disconnect Output Gear



1 ct.

Roller Bearing



1 ct.

Roll of 5mm ARB Air Line



1 ct.

Rear Disconnect Gasket



2 ct.

Output Shaft Staking Nuts



2 ct.

Output Shaft Washers



4 ct.

M10-1.25 x 48mm Studs



10 ct.

M10-1.25 Flange Nuts



6 ct.

M10-1.25 x 50mm Bolts





RECOMMENDED TOOLS

Dead blow hammer	Drift Punch
Gasket Scraper	Red Loctite
14 mm Box-end wrench	Wheel Bearing Grease
Jack Stand	Ultra Grey™ RTV Silicone
Ratchet & socket set	Transfer Case Gear Oil

VEHICLE MODIFICATIONS

- Shortening of rear driveline
- Clearancing or modification of rear frame crossmember.

CAUTION

1. Read all instructions completely and carefully before you begin.
2. Check to make sure the kit is complete and that no parts are missing (refer to the Kit Contents List on the first page of these instructions). If anything is missing, please contact Trail-Gear at 559.252.4950.
3. Park vehicle on a clean, dry, flat, level surface and block the tires so the vehicle can not roll in either direction.
4. The installation of this kit will require modification to the frame and rear driveline. Such modification should only be performed by a qualified technician.
5. Do not remove the rubber band from the rear disconnect tail housing until you are ready to perform step 20 of the installation instructions.

INSTALL INSTRUCTIONS (CONT'D.)



STEP 1

Place vehicle securely on jack stands.

STEP 2

Remove the fill plug from the transfer case and completely drain the oil from the transfer case.

STEP 3

Unbolt the rear driveline from the transfer case output flange.

STEP 4

Disconnect the speedo cable from the transfer case.



STEP 5

Lower the transfer case or remove the transfer case from the vehicle. If an aftermarket crossmember or skid plate is being used, the crossmember bolts may have to be loosened and/or the crossmember may have to be removed.

STEP 6

Remove the nut and washer connecting the rear output flange to the output shaft. Discard the nut & washer. Save the output flange for reinstallation.



INSTALL INSTRUCTIONS (CONT'D.)



STEP 7

Remove the (7) bolts connecting the tail shaft housing to the transfer case. Save the (7) bolts for reinstallation.



STEP 8

Remove the tail shaft housing and discard.



STEP 9

Remove any remaining gasket material from the flange of the transfer case housing.

STEP 10

Install the (4) M10 x 1.25 studs supplied with the kit into the top (4) bolt holes in the transfer case housing. Use a stud installation tool or the double-nut method to make sure the studs are installed securely.



STEP 11

Install a new gasket or Ultra Grey™ compound (not included) onto the flange of the transfer case housing.

STEP 12

Install the Rear Disconnect Intermediate Housing Assembly onto the transfer case housing.



INSTALL INSTRUCTIONS (CONT'D.)



STEP 13

Loosely install (3) of the bolts removed in Step 7 into the bottom (3) bolt holes of the transfer case housing.



STEP 14

Loosely install (4) M10 x 1.25 flange nuts onto the M10 studs installed on Step 10.

STEP 15

Evenly tighten the (3) M10 bolts and the (4) M10 nuts.

STEP 16

Install the Rear Disconnect Output Gear onto the transfer case output shaft.



STEP 17

Install the supplied staking nut and washer to secure the Rear Disconnect Output Gear to the transfer case output shaft. Red Loctite should be applied to threads of the nut.



INSTALL INSTRUCTIONS (CONT'D.)



STEP 18

Stake the nut onto the output shaft using a drift punch.



STEP 19

Apply wheel bearing grease to the roller bearing supplied with the kit and install the greased bearing over the Rear Disconnect Output Gear.



STEP 20

Remove the rubber band from the rear disconnect tail housing assembly. Carefully install the supplied gasket and Rear Disconnect Tail Housing onto the Rear Disconnect Intermediate Housing. Note: Modification or clearancing of the frame crossmember will be required.



STEP 21

Install the (6) M10-1.25 bolts and the (6) remaining M10-1.25 flange nuts to secure the Rear Disconnect Tail Housing to the Rear Disconnect Intermediate Housing. Snug all bolts evenly before tightening.



STEP 22

Install the output flange onto the Rear Disconnect Output shaft using the supplied staking nut and washer. Red Loctite should be applied to threads of the nut. Stake the nut onto the Rear Disconnect Output Shaft using a drift punch.



INSTALL INSTRUCTIONS (CONT'D.)



STEP 23

Install one end of the 5mm air line supplied with the kit into the push fitting in the side of the Rear Disconnect Intermediate Housing.



STEP 24

Connect the other end of the air line to the compressed air source on the vehicle and install per the instructions provided by the manufacturer of the compressed air source.

STEP 25

Fill the transfer case with the appropriate grade of oil. The transfer case should be overfilled with an additional quart of oil to account for the internal volume of the Rear Disconnect.

STEP 26

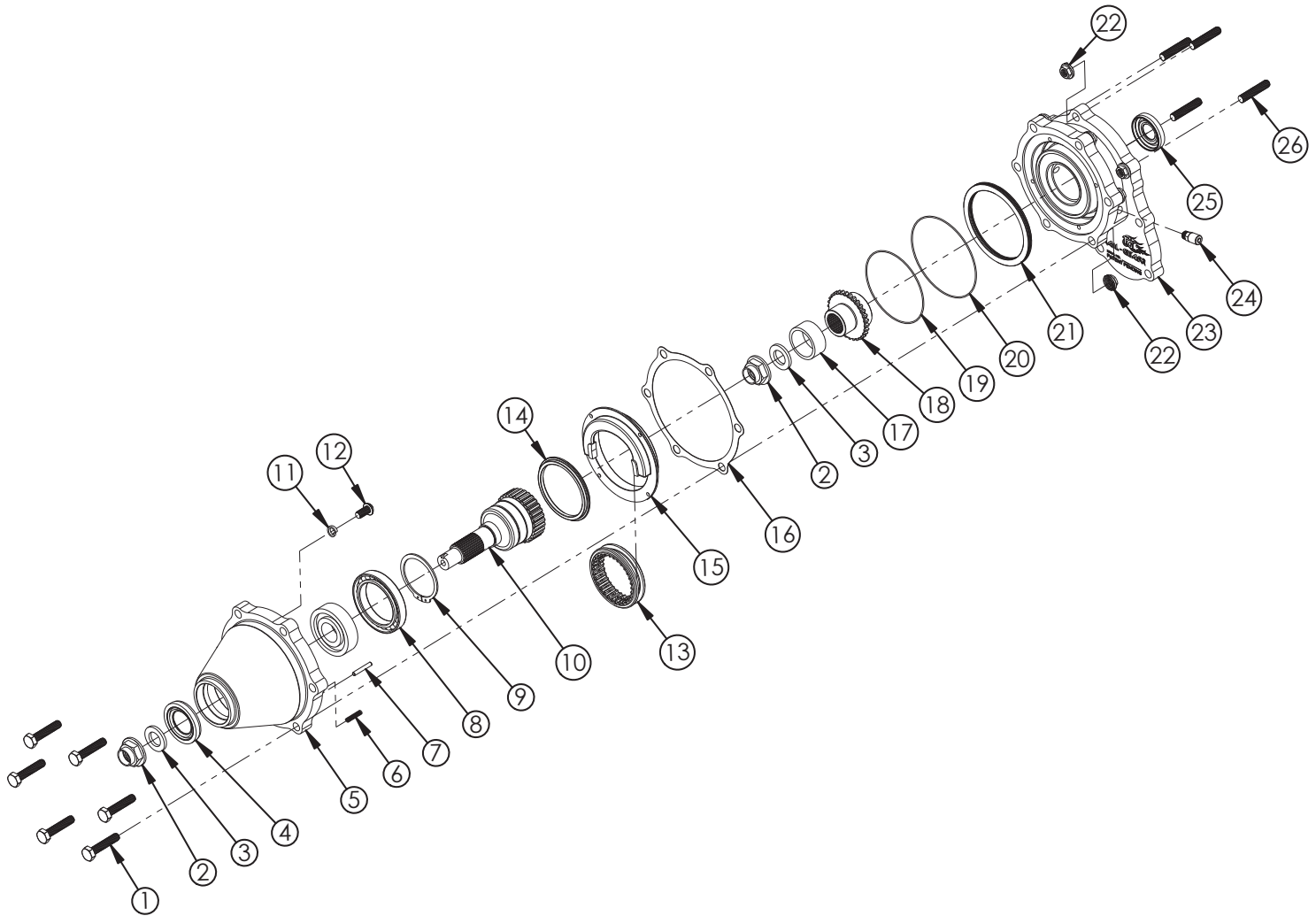
Reinstall the transfer case and crossmember/skid plate back into the proper position in the vehicle.

STEP 27

Reinstall the driveline onto the transfer case output flange. Note: The Rear Disconnect adds additional length to the transfer case housing and will require shortening or other modification of the driveline.



INSTALL INSTRUCTIONS (CONT'D.)



ITEM	PART NO.	QTY.	DESCRIPTION
1	105070-3	6	BOLT,M10-1.25x50,CLASS 10.9
2	140075-1	2	NUT,OUTPUT SHAFT
3	140125-1	2	WASHER,OUTPUT SHAFT
4	105016-1	1	SEAL,OUTPUT SHAFT,T-CASE
5	104006-1	1	HOUSING,TAIL,REAR DISCO
6	104008-1	20	SPRING,COMPRESSION,7/32"x1"
7	104009-1	4	PIN,DOWEL,3/16"x1-1/4",STEEL
8	104014-1	1	BEARING,FRONT LARGE,REAR DISCO
9	104013-1	1	RING,RETAINING,EXTERNAL,60mm
10	104000-1	1	OUTPUT SHAFT,CHROMOLY
11	104018-1	4	WASHER,LOCK,3/8",.55"O.D.
12	104026	4	SCREW,BHCS,3/8-16"x3/4",STL,PLATED
13	104007-1	1	COLLAR,SHIFT
14	104002-1	1	RETAINER,BEARING,REAR DISCO
15	104004-1	1	SHIFT FORK,FULL FLANGE,REAR DISCO
16	104019-1	1	GASKET,REAR DISCO
17	104016-1	1	BEARING,FRONT SMALL,REAR DISCO
18	104001-1	1	GEAR,OUTPUT,CHROMOLY
19	104012-1	1	O-RING,PISTON,INNER
20	104011-1	1	O-RING,PISTON,OUTER
21	104003-1	1	PISTON,REAR DISCO
22	104027	10	NUT,FLANGE,M10-1.25
23	104005-1	1	HOUSING,INTERMEDIATE,REAR DISCO
24	143017	1	FTG,PUSH-IN,5MM,1/8"BSPP
25	100059-1	1	SEAL,EXTENSION HOUSING,T-CASE
26	105009-1	4	STUD,T-CASE,M10-1.25x48